

The Industrial Metaverse: Supercharging Industrial Efficiencies

2024 IEEE International Symposium on
the Emerging Metaverse (ISEMV)

October 21, 2024

Gerhard Kress, Siemens AG



**Industrial
Metaverse**

**Hype
or Hope?**

Industrial Metaverse

A user-centric virtual place to **collaborate, experience & interact** with the **comprehensive Digital Twin** where **engineering decisions** are made leveraging precise robust data

Real & Digital



Industrial Metaverse

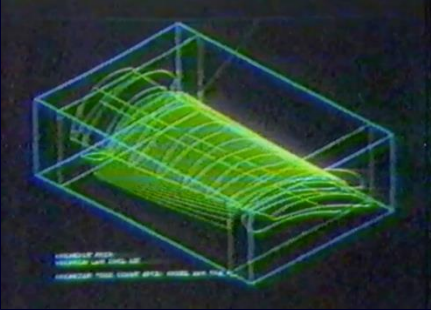
It is an evolution, not a revolution

Model pioneers



~1985

CAX sunrise



PLM pervasion



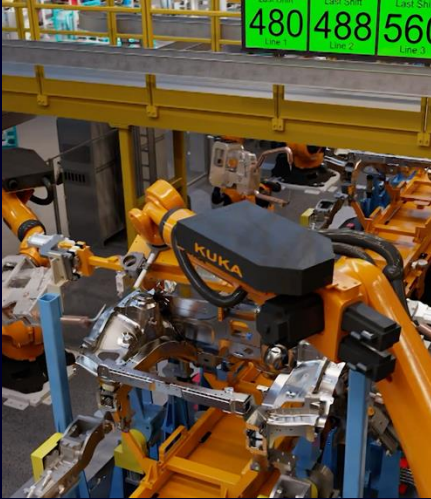
~2000

Digital Twin era



~2015

Industrial Metaverse



~2023

What do most
people see?



What do we see as “More real than real”?



Environmental Data



Energy market rates



Suppliers



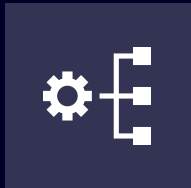
Power/Energy



Humans



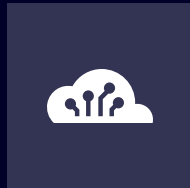
AGVs/Robots



As Designed, As Built, As Operated



Sensor Data



Cloud/Edge



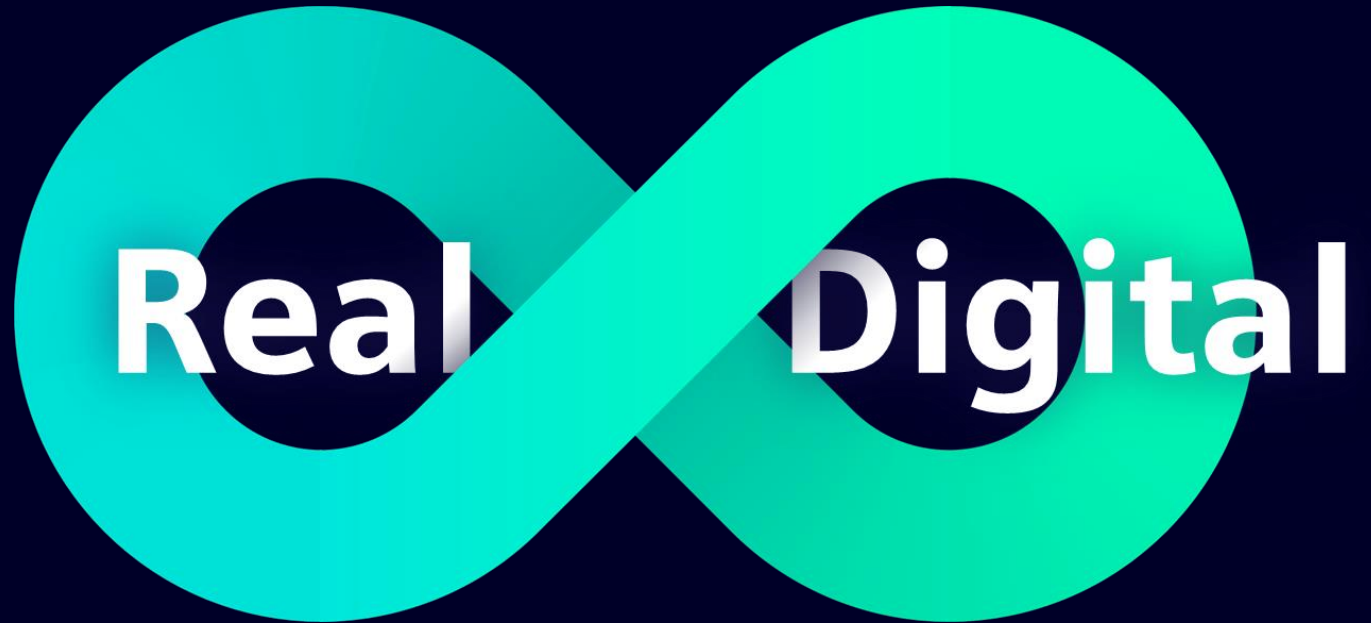
OEE



Remaining useful life

What counts now and in the future






Combining the
real and the
digital worlds

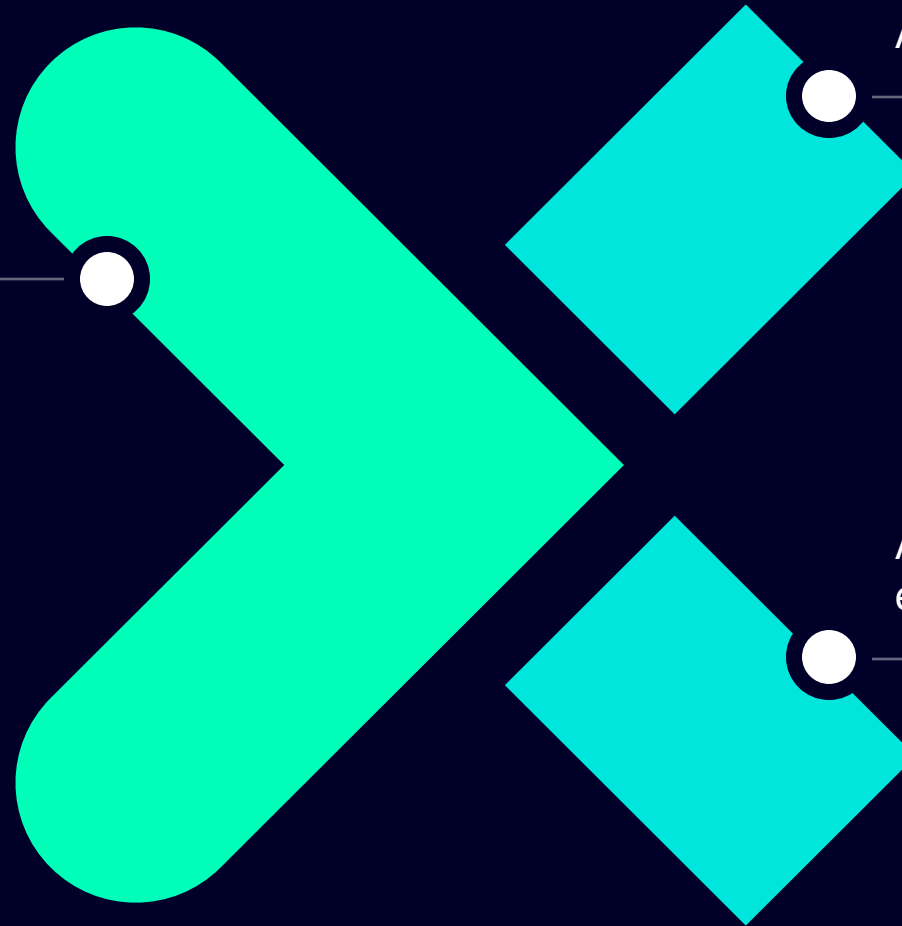


Siemens Xcelerator

The open digital business platform to deliver the Industrial Metaverse

A curated **Portfolio** with offerings from Siemens und Partners

-  Interoperable
-  Flexible
-  Open
-  „as-a-Service“
-  Cybersecure



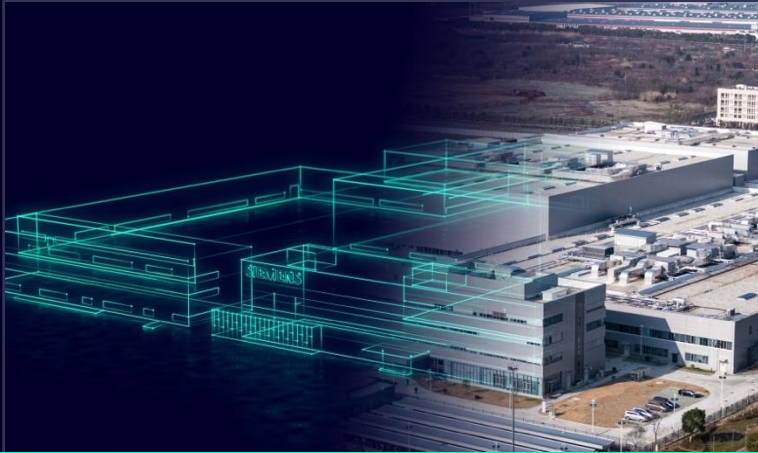
A powerful **Ecosystem**

A **Marketplace** to explore, educate, exchange and transact

First real examples

Siemens as Customer Zero

Nanjing



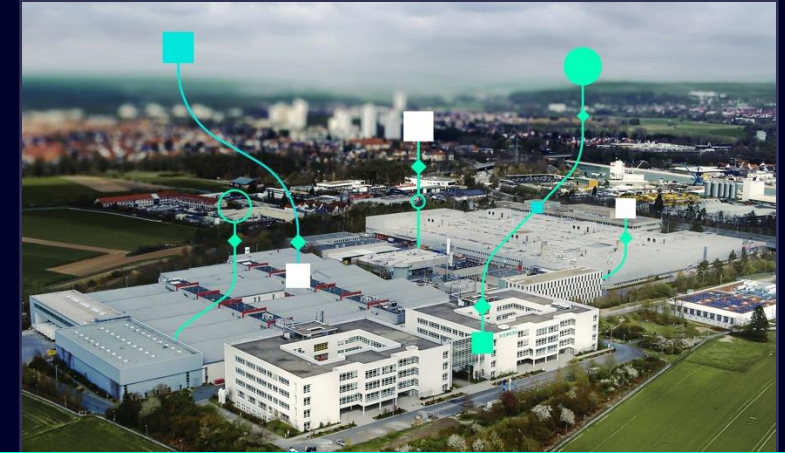
First digital native factory born from own digitalization concept

Siemensstadt



Digital twin ecosystem along the lifecycle of a sustainable and tech driven future city

Gerätewerk Erlangen



Blueprint factory for the industrial Metaverse

Industrial Metaverse as enabler for sustainability



Design & Engineering



Virtual Testing & Validation



Production




Operations



Training



An aerial photograph of a city district, likely Berlin, showing a dense urban layout with various buildings and green spaces. A blue grid is overlaid on the image, and several buildings are highlighted with a glowing blue outline, indicating a specific area of focus or a project site. The text is overlaid on the right side of the image.

**Collaboration
with the City of
Berlin – to make an
entire city district
carbon neutral**

SIEMENS

Optimized operation support and maintenance execution
Digital services for rolling stock and infrastructure

SIEMENS

27



**Collaboration to
guarantee train
availability for more
passenger capacity**

HOPE

Industrial
Metaverse

Why not there yet?

Combining the real and digital worlds is easier said than done



Lack of
connectivity

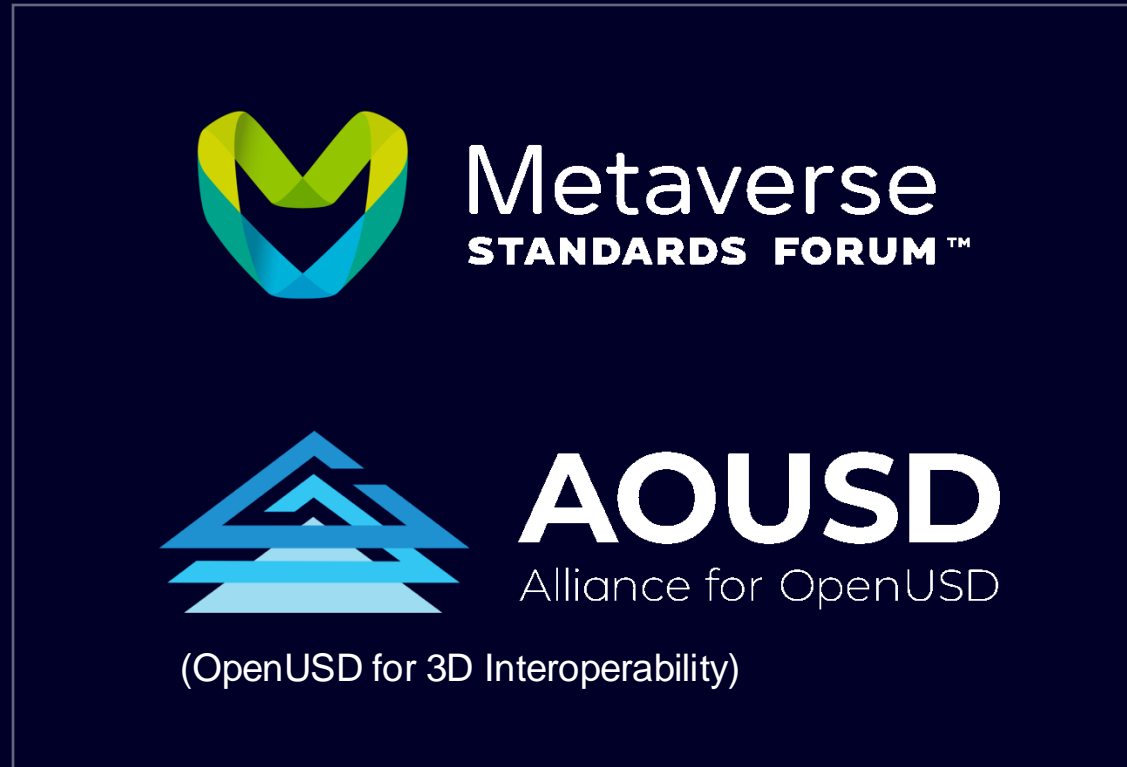


Lack of
interoperability



Lack of
skills

Standardization and interoperability will supercharge the Industrial Metaverse



What can be the role for the IEEE here?

Let's build the Industrial Metaverse **together.**

